

I n s t r u c t i o n M a n u a l

B r a i l l e L a b e l e r

B L - 1 0 0 0 L I N K



Microsoft ® and Windows ® are either registered trademarks or trademarks of Microsoft Corporation in the United States and/or other countries.

All other trademarks are the property of their respective owners.

Instruction Manual for Braille Labeler BL-1000 LINK
Rev 1.0 October, 2020

© 2020 KGS Corporation. All Rights Reserved.

Contents

1. Preface	4
1.1 Confirmation of contents in the package.....	4
1.2 Precautions on use	5
1.3 FCC Statement.....	6
1.4 International Compliance.....	7
1.4.1 2014/35/EU Low Voltage Directive	7
1.4.2 2014/30/EU EMC Directive	7
1.4.3 2014/53/EU Radio Equipment Directive	7
1.4.4 2011/65/EU RoHS Directive	7
1.5 Name of Keys of BL-1000 LINK.....	8
1.6 How to set a braille tape	10
1.7 Test print.....	12
1.8 Preparation for PC before connect BL-1000 LINK with it.....	14
1.8.1 How to install USB Driver.....	15
1.8.2 How to install the Braille Labeler Utility.....	17
2. How to make braille tape	19
2.1 Connecting BL-1000 LINK with PC	19
2.1.1 USB Connection.....	19
2.1.2 Bluetooth Connection	19
2.2 Making the braille dots tape by use of Braille Labeler Utility.....	21
2.2.1 Boot and Exit	21
2.2.2 Editing the inputted text in Data File to be printed.....	22
2.2.3 Implementing printing dots.....	24
2.2.4 Function of the sequence of numeric.....	28
2.2.5 How to input braille data.....	30
2.2.6 Braille Translator Option.....	30
2.2.7 Text File Management	31
3. Make a braille dot tape by use of common braille print software	33
3.1 Requisite Conditions of Communication port	33
3.2 Braille Code	33
4. Transaction of received data	34
5. Specification	35

The contents of this manual shall be subject to change without prior notice.

Instruction Manual

1. Preface

Thank you very much for your purchasing Braille Labeler BL-1000 LINK. Before you'll start to use it, we hope you have carefully read this instruction manual so as to have fully understood each of the functions, please pay much your attention about how to use it while keeping the instruction for use and duly confirm the way of how to operate it.

Attention before use of BL-1000 LINK

Please make sure that you install the attached software in your PC first, before Braille Labeler BL-1000 LINK connects to PC.

If BL-1000 LINK connects to PC before installation of USB Driver (attached software), USB driver isn't installed normally sometimes after it.

Please read and confirm "the chapter 1.8 preparation of PC to be connected", in this instruction manual before connecting BL-1000 LINK to PC.

1.1 Confirmation of contents in the package

The package of BL-1000 LINK includes the followings.

Braille Labeler BL-1000 LINK



AC Adaptor



Braille tape for BL-1000 LINK



Attached Software CD

USB cable

Instruction Manual Printed matter

Instruction Manual embossed dots

Braille Labeler BL-1000 LINK

1.2 Precautions on use

To preserve and maintain the conditions of the BL-1000 LINK, please take note of the following precautions listed below.

- ◆ Do not drop, neither strike, nor apply strong shock to BL-1000 LINK, since it is a precision instrument.
- ◆ Avoid spilling water, tea, dryings and etc, into BL-1000 LINK.
- ◆ Do not keep or stock BL-1000 LINK and braille tape for BL-1000 LINK exclusive use in the place where the direct rays of the sun pours and or in the place where it becomes high temperature like in the car, close to window or stove or so on.
- ◆ Do not disassemble BL-1000 LINK. By disassembling the BL-1000 LINK, no guarantee is made.
- ◆ Use an attached AC adaptor only for BL-1000 LINK exclusive use. Please do not use other kinds of AC adaptor. It has to be so danger if you'll use other kinds of adaptors.
- ◆ Be sure to earth the AC cord to an earthed outlet. Also, plug it into an easily accessible outlet near the equipment and unplug it immediately if there is smoke or a strange odor.
- ◆ Use a braille tape only for BL-1000 LINK exclusive use. It will be malfunction and or cause to break BL-1000 LINK like stuffed tapes and or bad quality of embossed dots, if you'll use other kinds of tapes.
- ◆ Use BL-1000 LINK after closing the lid and or cover to be opened and closed to avoid gathering dust.
- ◆ Please make sure to fix the cover of both print and braille tape to each portion to be set.
- ◆ Do not the following actions to prevent clogged tape inside BL-1000 LINK.
- ◆ Do not cut the tape on the way of to print dot, to send and or rewind tape.
- ◆ Do not print at less remains of tape.
- ◆ Please confirm the braille tape position to be fixed inside the tape guide rail, which is located in the right side of cover for dots print, before print.
- ◆ Please change the braille tape at less remains of tape.
- ◆ If pieces of the braille tape will be remained inside of BL-1000 LINK, please open the cover for dots print and remove them by a pair of tweezers and etc.
- ◆ Due to the properties of the roll tape, the tape may be bent or twisted when printed continuously for a long time. To keep print quality, it is recommended to divide it into about 50 columns and cut once.

Instruction Manual

1.3 FCC Statement

This device complies with Part 15 of the FCC Rules. Operation is subject to the following two conditions:

- (1) This device may not cause harmful interference.
- (2) This device must accept any interference received, including interference that may cause undesired operation.

This equipment has been tested and found to comply with the limits for a Class B digital device, pursuant to Part 15 of the FCC Rules. These limits are designed to provide reasonable protection against harmful interference in a residential installation. This equipment generates, uses and can radiate radio frequency energy and, if not installed and used in accordance with the instructions, may cause harmful interference to radio communications. However, there is no guarantee that interference will not occur in a particular installation. If this equipment does cause harmful interference to radio or television reception, which can be determined by turning the equipment off and on, the user is encouraged to try to correct the interference by one or more of the following measures:

- Reorient or relocate the receiving antenna.
- Increase the separation between the equipment and receiver.
- Connect the equipment into an outlet on a circuit different from that to which the receiver is connected.
- Consult the dealer or an experienced radio/TV technician for help.

Changes or modifications not expressly approved by the party responsible for compliance could void the user's authority to operate the equipment.



1.4 International Compliance

1.4.1 2014/35/EU Low Voltage Directive

EN 62368-1:2014+A11: 2017

1.4.2 2014/30/EU EMC Directive

EN 55024:2010

EN 55032:2012+AC: 2013

1.4.3 2014/53/EU Radio Equipment Directive

EN 300 328 V2.2.2

EN 301 489-1 V2.1.1

EN 301 489-17 V3.1.1

EN 62479:2010

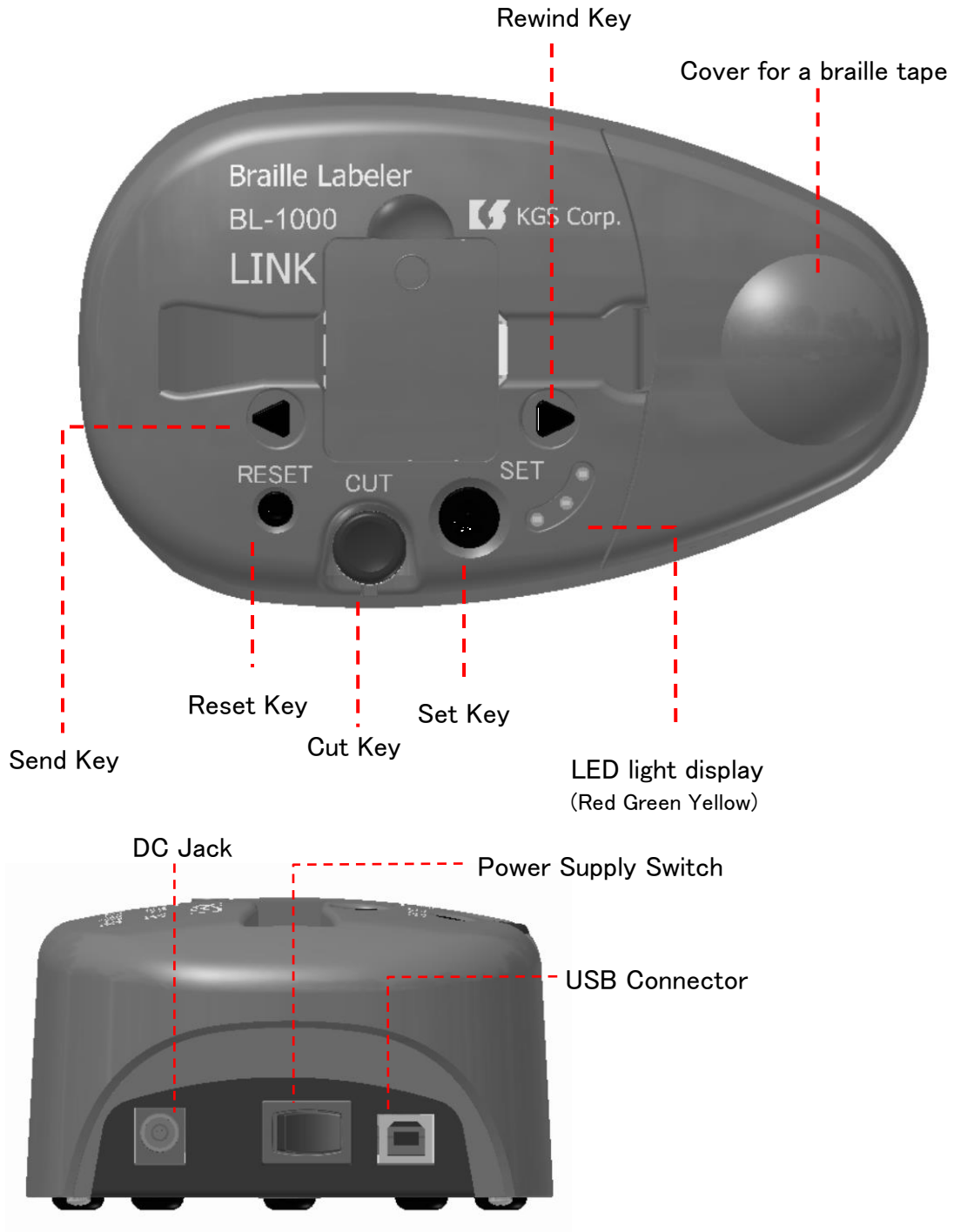
1.4.4 2011/65/EU RoHS Directive



Instruction Manual

1.5 Name of Keys of BL-1000 LINK

Please confirm details of Keys and Functions one by one about the following parts.



Braille Labeler BL-1000 LINK

Set Key	Set Key is used to send the top of a braille tape.
Cut Key	Cut Key is used to cut a braille tape after printed dots. If inside scissor and or Cut key does not come back to the normal position, snag the opening in front of Cut key on something thin and pull up.
Reset Key	Reset Key is used to reset the memory of the data which is waiting for the print, left in buffer.
Send Key	Send Key is used to send a braille tape to the left side by rotating a tape roller. Please try to use this key when a braille tape clogs.
Rewind Key	Rewind Key is used to rewind a braille tape to the right side by rotating a tape roller. Please try to use this key when a braille tape clogs.
LED light display	By a color of Lighting and or Off, you can confirm the situation of BL-1000 LINK.
Cover for a braille tape	To set a braille tape in the body, please get the cover off. Please shut the cover at the printing dots.

LED Light display

Red lighting	It indicates "Turn On".
Green lighting	It indicates a braille tape is set properly in right position.
Yellow lighting	It indicates Waiting data memory is remained in the buffer.

Buzzer sound

Three times of Slightly long beep sound	It indicates a situation that a braille tape is exhausted and or it isn't set properly at the "Turn ON" or pushing Set key.
Two times of rather short beep sound	It indicates a situation after printed dots on a braille tape. This sound continues until printed braille tape will be removed from a tape exit after cut. Any kind of jobs will not be accepted without pushing Cut key.
Three times of short beep sound	It indicates a situation that reset the buffer by pushing Reset key. Yellow LED is also put out.

Instruction Manual

1.6 How to set a braille tape

A braille tape is not set inside the body of BL-1000 LINK before shipment. Please set an attached braille tape for exclusive use for print by the following procedures.

Procedure for setting a tape

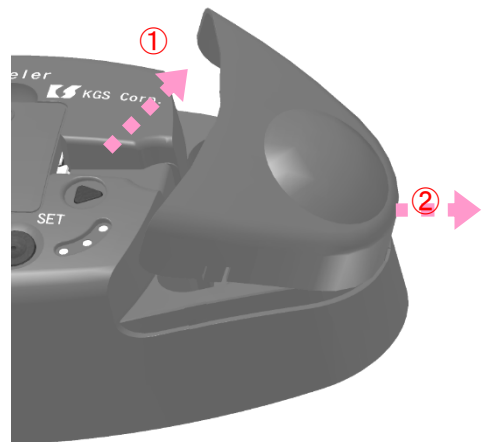
1. Connect BL-1000 LINK to AC adaptor, turn on the power supply switch.

It shortly sounds like a mechanical movement to send a braille tape to the exit, and slightly long beep sounds at three times. This means to be out of a braille tape.



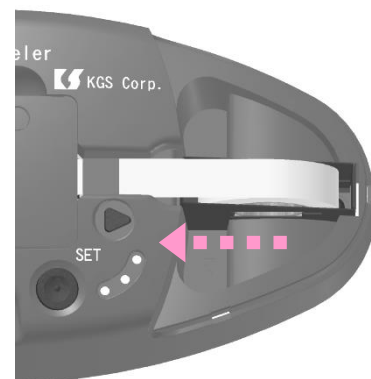
2. Open a cover for a braille tape, set a whole braille tape with a paper case vertically in the center between partitions in the body.

Set a paper case which side is higher than other one, so as to be in the left side in the tape holder place. (left side is close to the tape entrance)



3. Remove a seal which fixes an edge of a braille tape on a roll.

Insert an edge of a braille tape into the entrance of printing section, and insert it by the place to meet an inside roller of printing section.

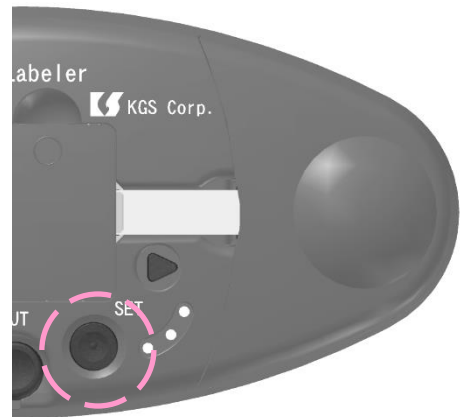


Braille Labeler BL-1000 LINK

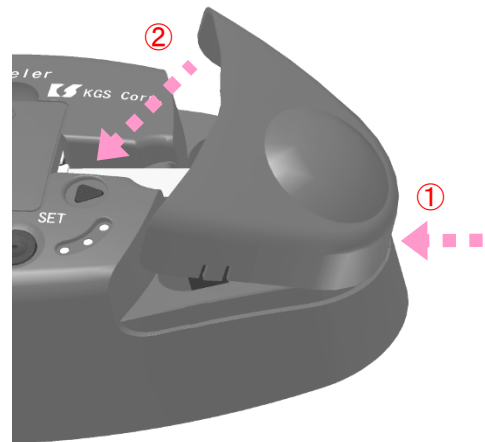
4. Push the Set key to arrange the position of an edge of a braille tape so as to be in right position before printing dots.

It means the inside roller doesn't take up the tape properly if slightly long beep sound at three times after pushing Set key and mechanical movement sounds shortly.

If so, again insert an edge of a braille tape into the entrance of printing section, and insert it by the place to meet an inside roller, and again push Set key.



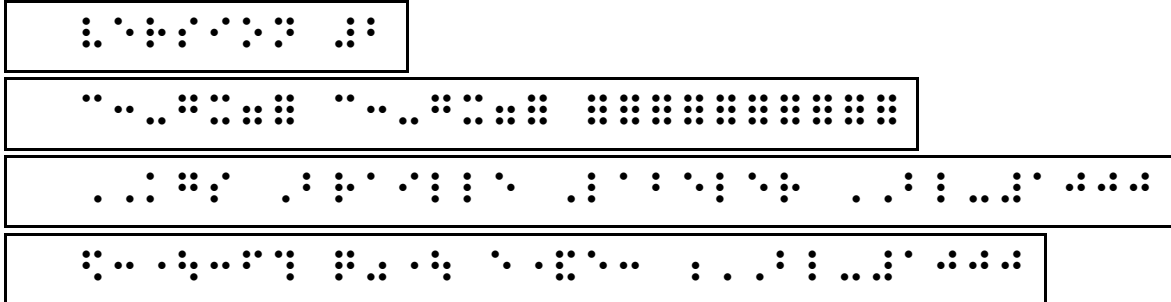
-
5. Close the cover for a braille tape, after setting a braille tape properly.



Instruction Manual

1.7 Test print

Print following four lines as test print.



The first line	Software version number “version *” (English)
The second line	Test pattern
The third line	“KGS Braille Labeler BL-1000” (English)
The fourth line	“KGS Braille Labeler BL-1000” (Japanese)

Procedure of test print

1. After connect AC adaptor with BL-1000 LINK, turn on the power supply switch while pushing both Set Key and Reset Key.

A Braille tape isn't ready, if slightly long beep sound at three times after mechanical movement sounds shortly.



2. Try to set a Braille tape again, while referring to the procedure as shown as above, if slightly long beep sound at three times.

Push Set key and start to print.

Try to take the same procedure from item (1), if print doesn't start.

A Braille tape moves to the tape position to be cut after the print of one line ends, and the beep starts to sound at intervals of 2 seconds.

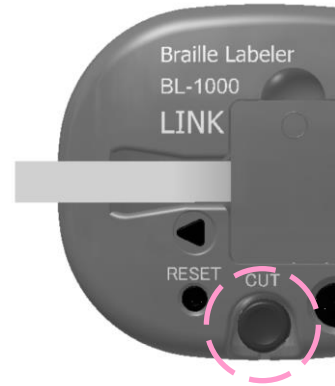


Braille Labeler BL-1000 LINK

3. Push Cut Key and cut off printed tape.

The beep sounds at intervals of 10 seconds, after removing and cutting off printed tape.

4. Push Set key, and the second line starts to print.



5. Push Cut key after print, and cut off printed tape.

6. Push Set key, and the third line starts to print.

7. Push Cut Key and cut off printed tape.

8. Turn off the power supply switch and get off AC Adaptor after whole operation.

Instruction Manual

1.8 Preparation for PC before connect BL-1000 LINK with it

Two kinds pieces of software are attached with BL-1000 LINK.

(A) USB Driver for BL-1000 LINK – This is the requisite software to connect BL-1000 LINK with PC through USB cable.

Be sure to install this USB Driver into PC before connect BL-1000 LINK with PC.

(B) Braille Labeler Utility – This is an Utility software to make easily braille label by use of BL-1000 LINK.

Those software's are correspondent to the following version of OS.

Windows ® 7/8/8.1/10 (64/32)

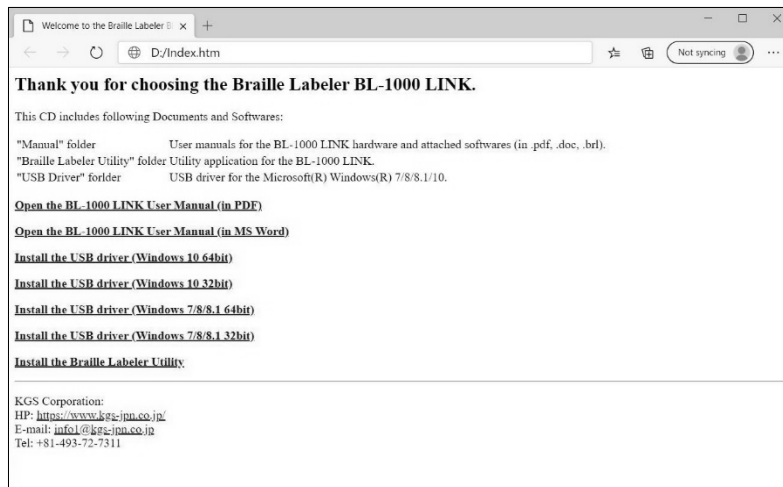
Please use the PC, that OS as shown above are working inside.

Attention

Depending on your PC environment, you may need administrator privileges to install the software. In that case, please contact your system administrator.

When you set the attached software CD (Braille Labeler BL-1000 LINK Support Disk) in CD drive of your PC, the following page index is opened.

If it doesn't open automatically, please open the CD drive directly and double-click the "index.htm" file.



Braille Labeler BL-1000 LINK

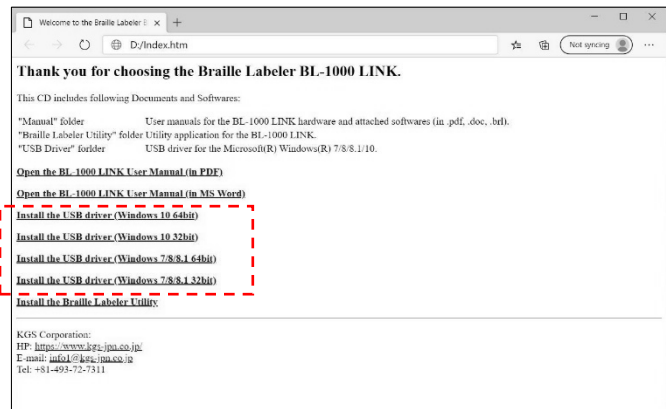
1.8.1 How to install USB Driver

Attention

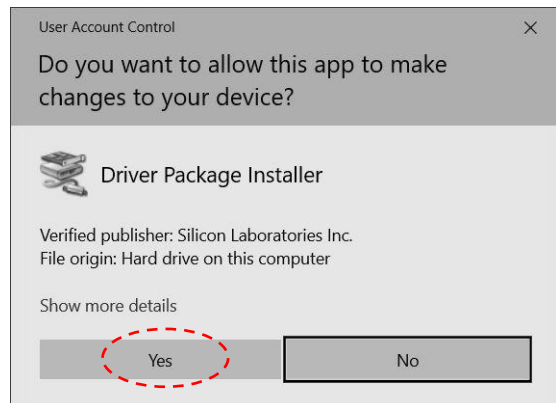
USB driver has four kinds depending on the OS version.
Choose which one suits OS in your PC, and start to install.
Take the following procedures in order to install USB Driver.

1. Click on any one of “Install the USB driver (Windows 10 64bit)”, “Install the USB driver (Windows 10 32bit)”, “Install the USB driver(Windows 7/8/8.1 64bit)” or “Install the USB driver(Windows 7/8/8.1 32bit)” on the page index, and then the program will soon start.

Please follow the instruction shown on the display, and start.

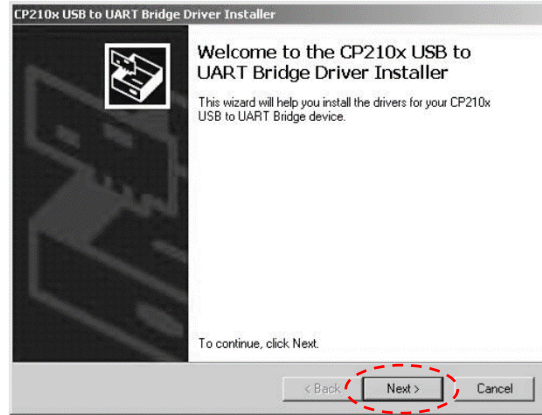


2. Click [Yes], in order to install USB driver.



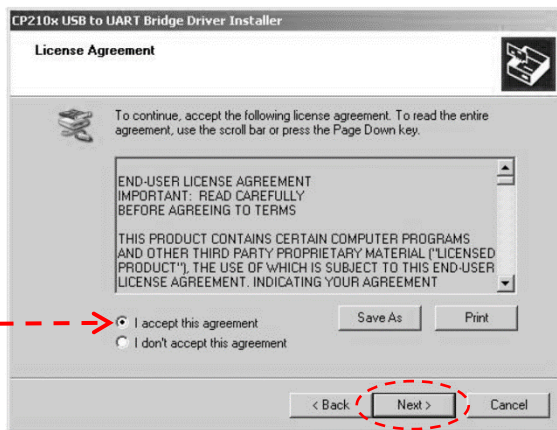
Instruction Manual

3. Click [Next], according to the instruction of the installer.



4. If agree, choose [I accept the agreement] and click [Next].

If don't agree, you can't use BL-1000 LINK by the way of USB connection.



5. [Finish] is displayed on the screen.



Braille Labeler BL-1000 LINK

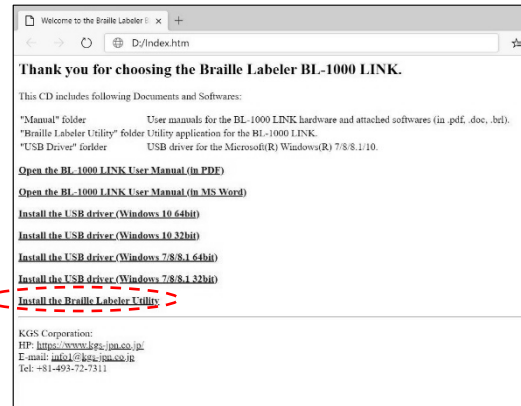
1.8.2 How to install the Braille Labeler Utility

Refer to the following procedure in order to install the Braille Labeler Utility.

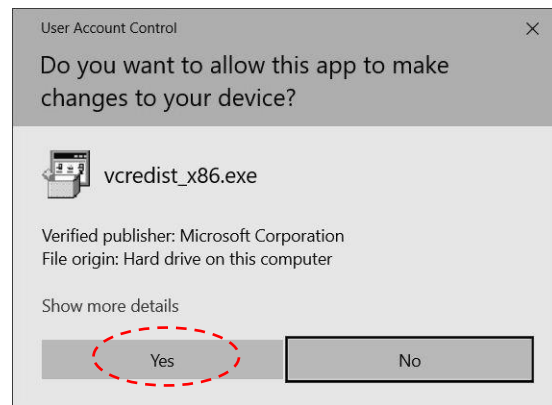
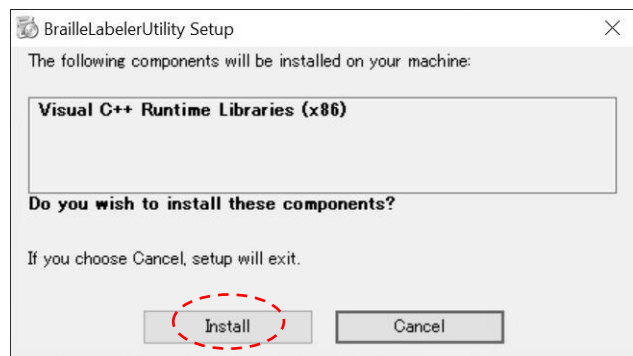
1. Click on “Install the Braille Labeler Utility” on the page index, and then setup.exe will soon start.

This program checks whether essential software of Microsoft Corporation is built in or not, in order to execute Braille Labeler Utility.

Please follow the instruction shown on the display, and start.

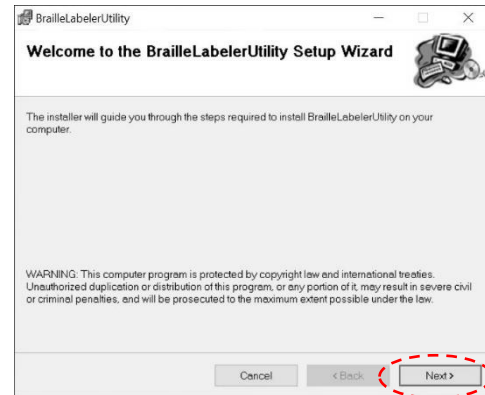


2. Click [Install], and then [Yes] on next screen, in order to install Braille Labeler Utility.



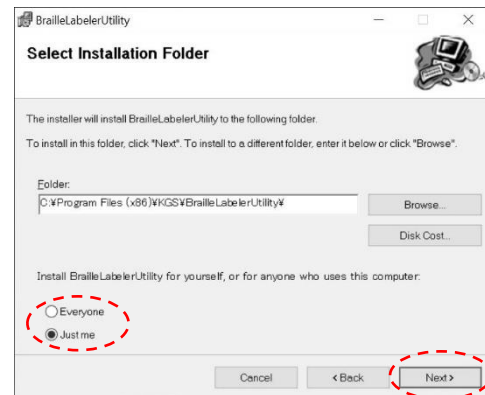
Instruction Manual

3. Click [Next] and install Braille Labeler Utility according to the instruction of the Installer.

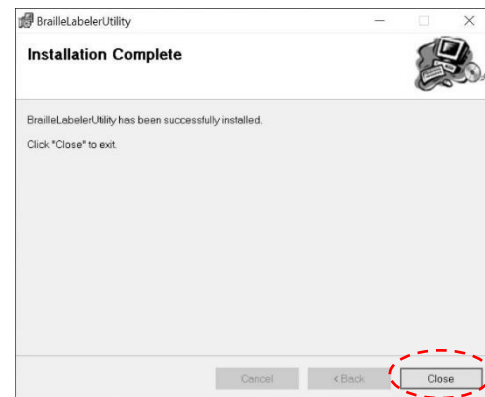


4. Choice [Everyone] or [Just me], and click [Next].

And click [Next] on the next window, in order to start the installation.



5. Installation is completed completely, click [Close].



Braille Labeler BL-1000 LINK

2. How to make braille tape

This chapter mentions procedures to print braille dots on tape after connect BL-1000 LINK to PC.

If the necessary software's haven't been installed into PC, please refer to the chapter of [1.8 Preparation for PC before connect BL-1000 LINK with it] and start to install.

2.1 Connecting BL-1000 LINK with PC

Connect AC Adaptor to BL-1000 LINK, turn on the power supply switch. Then the head of braille tape is automatically at the starting point to print dots. Set new braille tape, if it is exhausted.

Connect BL-1000 LINK with PC, according to the following instructions.

2.1.1 USB Connection

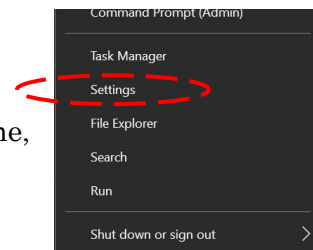
Procedures

1. Boot PC.
2. Connect BL-1000 LINK with PC by a USB cable.

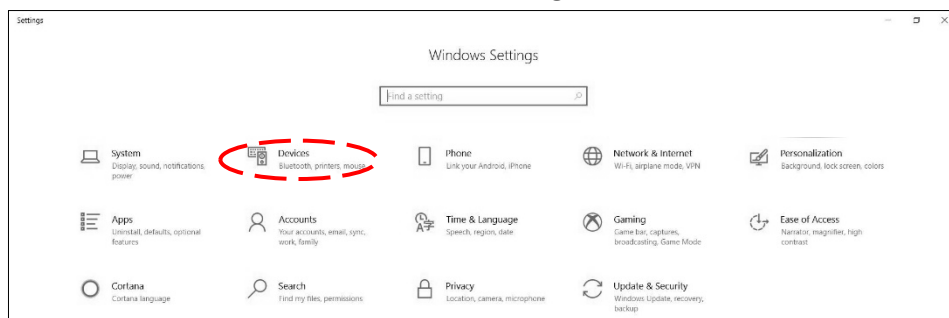
2.1.2 Bluetooth Connection

Procedures

1. Pair BL-1000 LINK with PC.
Press [Windows] key and [X] key at the same time, select "Settings" from the menu.

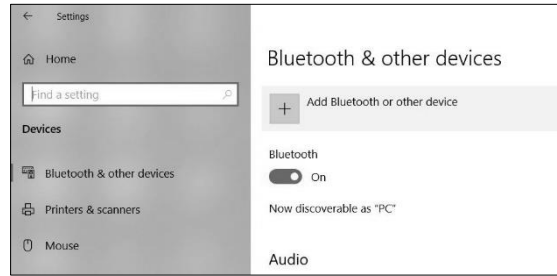


2. Select "Devices" on "Windows Settings" screen.

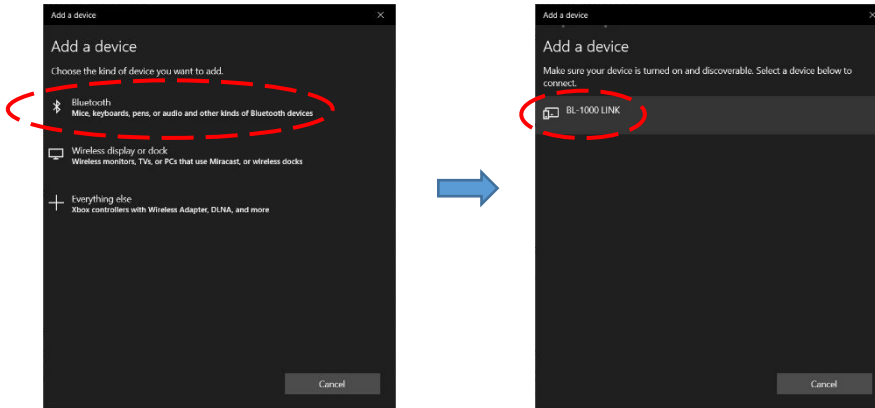


Instruction Manual

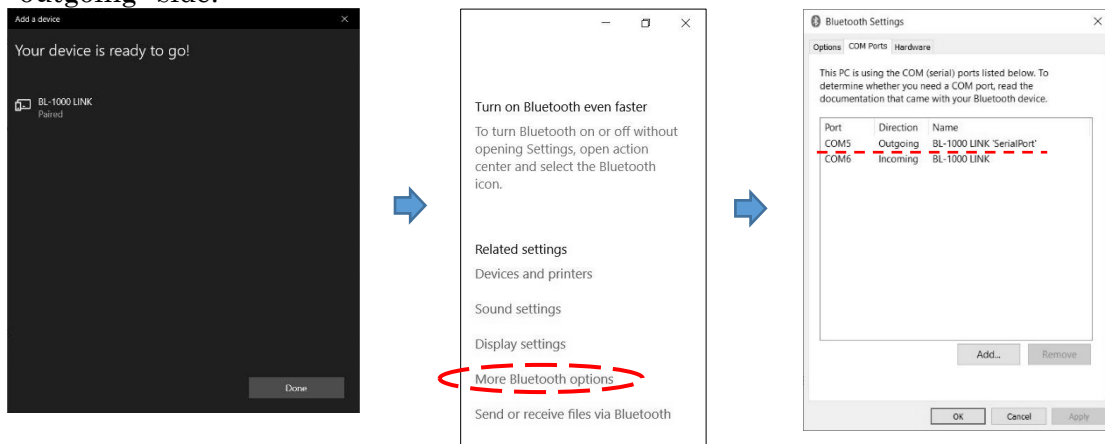
3. “Bluetooth & other devices” screen will open.
Check your PC’s Bluetooth is turned on, then select “Add Bluetooth or other device”



4. On “Add a device” screen, select “Bluetooth” and then “BL-1000 LINK”



5. After pairing BL-1000 LINK and PC, click [Done] and go back to “Bluetooth & other devices” screen.
Then confirm the COM port from “More Bluetooth options” in Related settings.
When selecting the connection port, select the port whose port direction is “outgoing” side.



Braille Labeler BL-1000 LINK

2.2 Making the braille dots tape by use of Braille Labeler Utility

2.2.1 Boot and Exit

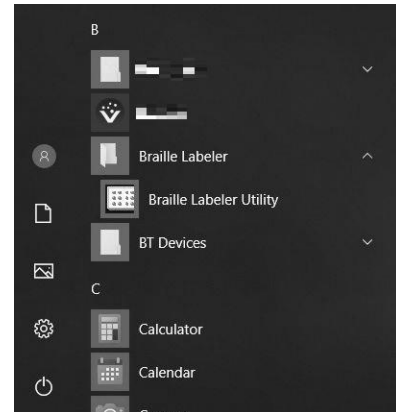
It is possible to boot Braille Labeler Utility by one of the following procedures.

1. Double Click on the Icon of Braille Labeler Utility on desktop.

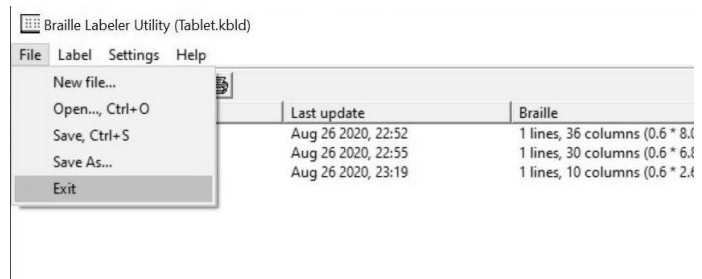


-
2. Start Menu, and clicked on “Braille Labeler Utility” in the file of “Braille Labeler”.

Double click the Text File (extension .kbld), in the case of to use recorded text.



3. Click “File” and to “Exit” in Menu Bar of Main Windows, in the case of to end Braille Labeler Utility.



Instruction Manual

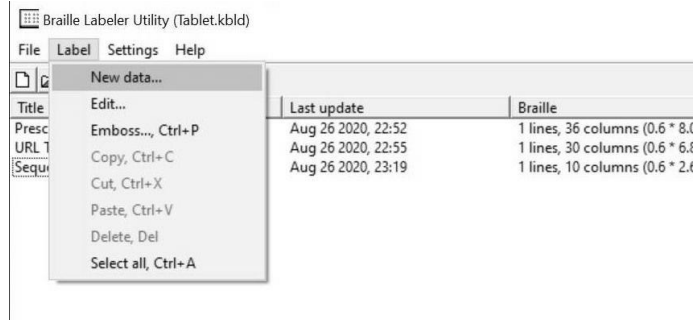
2.2.2 Editing the inputted text in Data File to be printed

When Braille Labeler Utility is booted, the last opened text you used before is opened and all text in it are displayed.

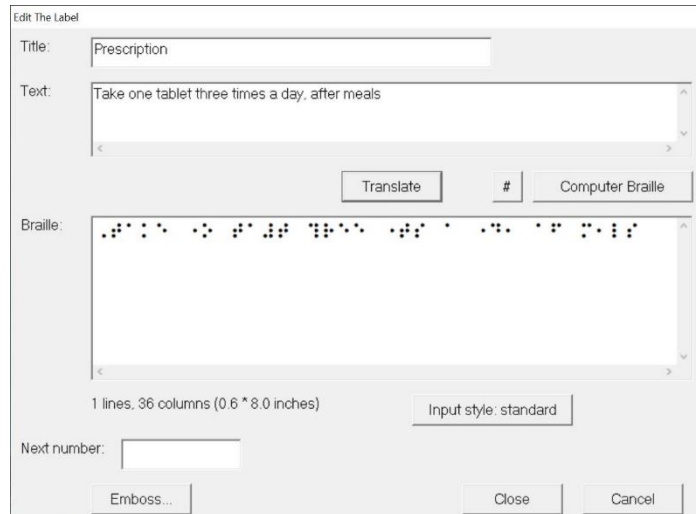
1. In the case of to make new text to print dots on Braille tape, click “Label” in Menu bar, and click “New data”.

In the case of to edit the content of recorded text, choose one you want to edit, and double click that one in all list.

(Keyboard operation) Arrow the file you want to edit in the list, and Push Enter Key.



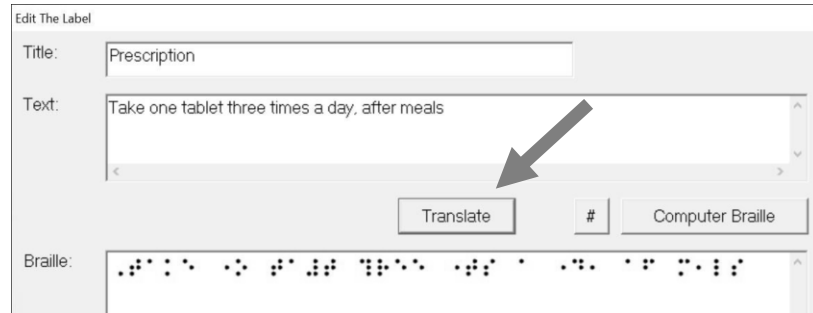
2. In any case of which one you choose, the following windows are displayed.



3. Input sentence and or words you want to make dots print in the column of “Text:” and click [Translate].

Braille Labeler BL-1000 LINK

Then the sentence and or words are translated into Braille dots, and they are displayed in the column of “Braille:”.



The braille dots displayed on the column of “Braille:” are actually printed on the braille tape.

You can directly edit the text in the column of “Braille:”.

Specify the title of the text you made now, in the column of “Title:”, and the titles in the column of “Title:” are displayed. (Omission is acceptable.)

Click [Close], then file editing text, and close editing window.

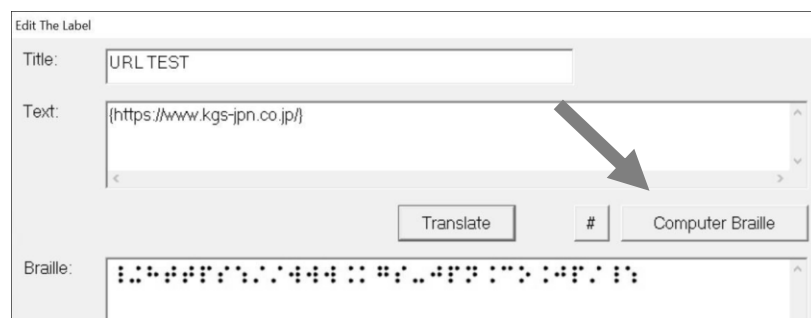
When you cancel the editorial text, click [Cancel].

Computer Braille

When URL of home page and or email address will be input, it is necessary to distinguish their text from others by the means of Computer Braille normally.

Bracket URL and or email address off by use of {} to specify the extent of text to be translated into Braille, in the Braille Labeler Utility.

Put the text of URL of homepage, email address and so on between brackets, after click [Computer Braille] in the lower right-hand in the column of “Text:”.



Instruction Manual

2.2.3 Implementing printing dots

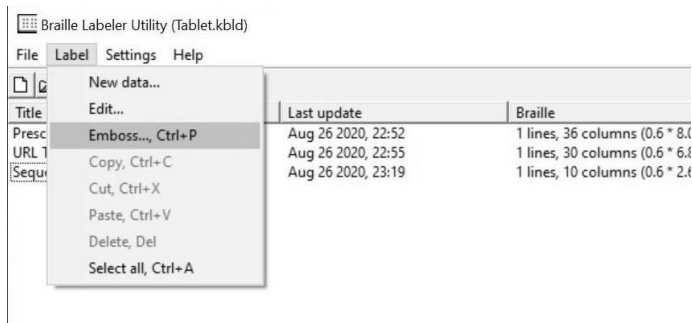
Operate BL-1000 LINK as following procedures, in order to implement printing dots of text after editing.

Procedures

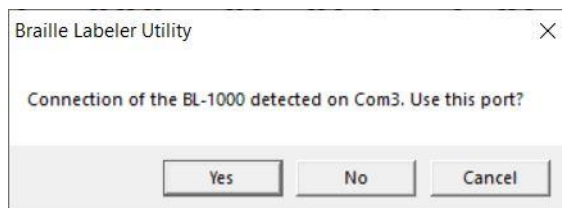
1. Click the Emboss command by which one in the followings, (a) or (b).
 - (a) Click [Emboss] on “Edit the Label” window, as shown in previous chapter.



- (b) Choose the text in listed one in Main window, do “label” in menu bar and click “Emboss” in orders.



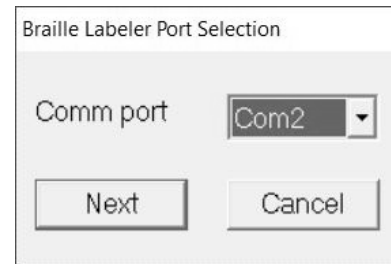
2. Then connection port is retrieved inside BL-1000 LINK, following message is displayed in the case of USB cable connection.



When use this port, click [Yes].
When not use this port, click [No].

Braille Labeler BL-1000 LINK

3. Following window is displayed, if USB port can't be retrieved.



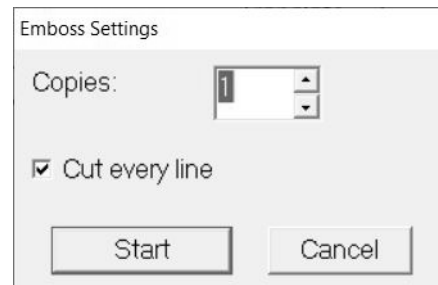
When this window is displayed, choose communication port, which connect BL-1000 LINK, and click [Next].

Attention

Once choose communication port, "Braille Labeler Port Selection" window isn't displayed from next time at the print.

Boot Braille Labeler Utility again, in the case of change the communication port on the way.

4. Followig window is displayed.

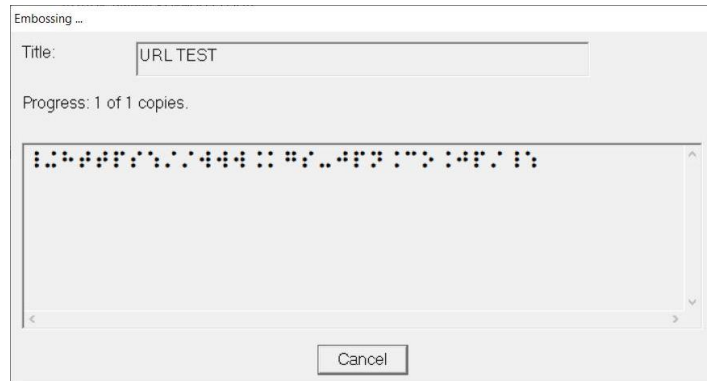


Check "Cut every line" in the check box, when cut a braille tape after printed dots by a scissors of BL-1000 LINK.

Take off check "Cut every line" in the check box, when continue to print dots and cut braille tape of printed dots by scissors by yourself later.

Choose quantity of how many pieces of a braille tapes to be printed dots, click [Start], and then start to print dots.

Instruction Manual



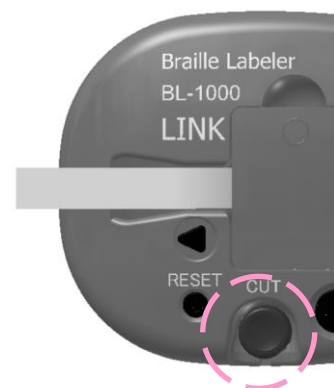
5. Push Set key start to print.

A Braille tape moves to the tape position to be cut after the print of one line ends, and the beep starts to sound at intervals of 2 seconds.



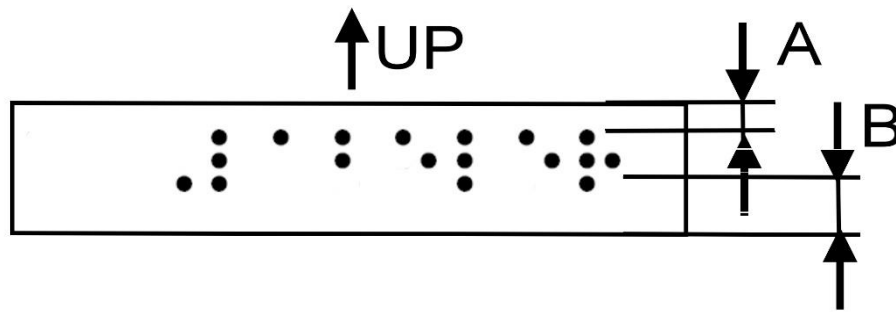
6. Push Cut Key and cut off printed tape.

The beep sounds at intervals of 10 seconds, after removing and cutting off printed tape.



Braille Labeler BL-1000 LINK

7. Push Set key, and the following print starts. Procedure 6 and 7 as shown above repeats after it.



A black width of top and bottom has different one, after printed. Narrow one of blank width shows the upper part. ($A < B$)

(Attention)

After print ends, and if you push Cut key before a braille tape will move to the tape position to be cut, the last printed dots would have been cut.

Please make sure that you'll push Cut key after the beep starts to sound.

If the last printed dots are remained on the tape position to be printed next, please push Set key for a little bit long, then let a braille tape move to the tape position to be cut, push Cut key and remove the printed dots tape.

Instruction Manual

2.2.4 Function of the sequence of numeric

Braille Labeler Utility has a function to print numbers, adding one by one (the function of the sequence of numeric order), and print plural number pieces of label. It can print numeric order on the label, from one figure to 8 figures, according to the way to assign by yourself. Following are procedures to use this function.

Let's make 10 pieces of the labels of "Test 10001 to Test 10010" as an example.

Procedures

1. First of all, input "Test" in the column of "Text", and do 5 pieces of [#] of the mark.

They are : "Test #####" (5 pcs of #)

You can use [#] of the mark on the windows and input it in the column of "Text".

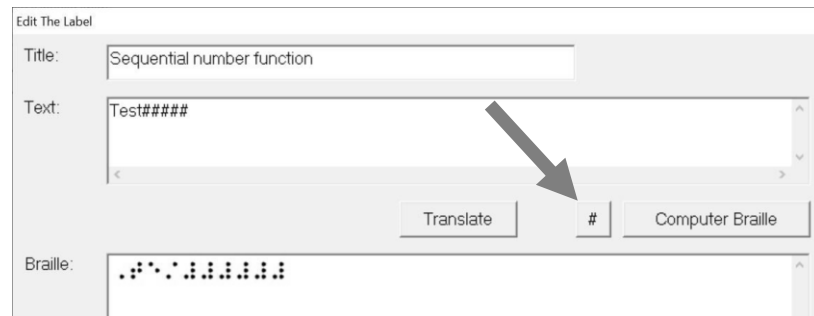
2. Click [translate], and the text is translated into Braille dots.

Then all portion of [#] is translated into Number Sign (Dots, 3, 4, 5, 6).

You can confirm additional Number Sign, it is one piece of [#] more than the input. This means it is necessary to need one piece of [#] as mark prior to head of starting Number Sign.

[Remark]

If you directly edit the column of "Braille", please push [#] at times you need and do [#] at one time as Number Sign.



Braille Labeler BL-1000 LINK

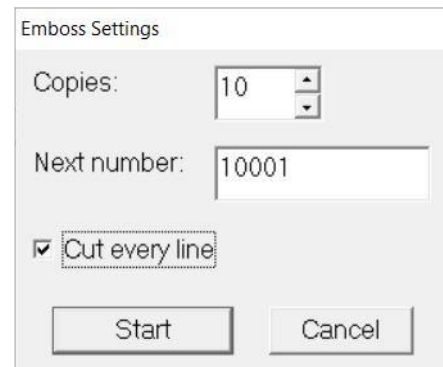
3. Input beginning Number in the column of “Next number”, as 10001.



4. Click the Emboss command.

Followings are displayed on the windows.

Input Number you need directly in the column of “Copies”, then push the Start command and print starts.



Number in the column of “Next number” automatically increases after print, according to printed Numbers.

If you click “Save” to save the text, you can use continuation of numeric order at the next time.

Instruction Manual

2.2.5 How to input braille data

There are two kinds of way to input braille text, when input them in the column of “Braille:”.

- (a) Standard input – translate the text input by a keyboard into braille one.
- (b) 6-dots style – Six keys on keyboard are correspondent to each dot of braille one and input the text by the way of combination of each dot.

Six keys on keyboard are assigned as following under the initial stage.

Dot 1: F	Dot 4: J
Dot 2: D	Dot 5: K
Dot 3: S	Dot 6: L

The current input mode is displayed on the lower right-hand column of “Braille:”.



Click this input mode, and pop-up menu is displayed to change the mode.

(Keyboard operation) Push the Tab key on the column of “Braille:”, and focus moves to the column of the input mode of “Braille:”.

2.2.6 Braille Translator Option

Translator function in Braille Labeler Utility has the following option.

"Use Grade II"

When this option is available, use Grade II Braille (particular braille abbreviation) for translation.

When this option isn't available, can't use Grade II Braille.

This option is set to be available at the boot of Braille Labeler Utility. Operate the following procedure, when you change the setting.

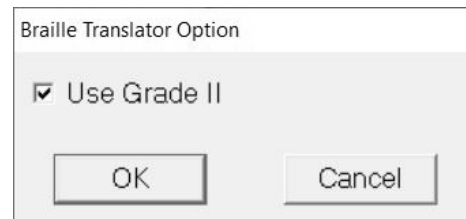
Braille Labeler BL-1000 LINK

Procedures

1. Click “Settings” in Menu bar, and “Braille Translator Option”.



2. Then new window is displayed.



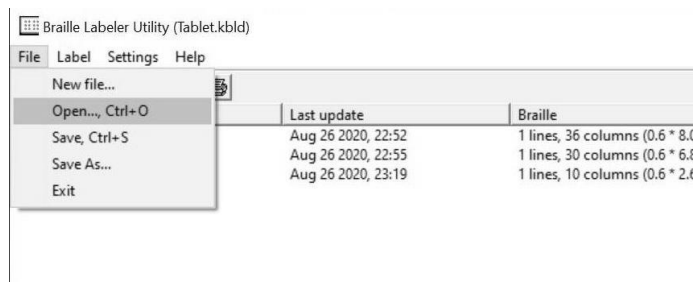
3. Click in the check box, for the valid option of “Grade II Braille”. Take off the check in the check box, for the invalid option.

4. Click [OK], then the settings are changed. Click [Cancel], if you don't change the settings.

2.2.7 Text File Management

The last opened text at the previous time is loaded, at the boot of Braille Labeler Utility.

Choose the “File” in Menu, and click “Open” to open other files.



Instruction Manual

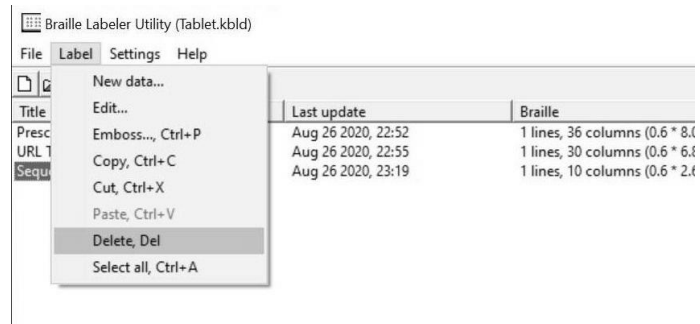
Choose the “File” in Menu, and click “Save” to save the text after changing the data.

Choose the “File” in Menu, and click “Save as” to save the text in other file.

To delete the text

Delete unnecessary text by following procedure.

1. Choose unnecessary text you want to delete in the text list in Main Window.
2. Right Click and open Pop-up Menu, choose “Delete” command. There is the same command in “Label” in Menu.



To copy the text

Copy the text in other file by following procedure.

1. Choose the text in text list in Main Window.
2. Right Click and open Pop-up Menu, choose “Copy” command. There is the same command in “Label” in Menu.
3. Open the other file to forward the copied file by the command of “Open” in “File” Menu.
4. Choose the space in the text list to forward copied one.
5. Right Click and open Pop-up Menu, choose “Paste” Command. There is the same command in “Label” in Menu.

3. Make a braille dot tape by use of common braille print software

If the following conditions are met by common braille print software, you can make braille dot tape by transmission of braille text into BL-1000 LINK.

3.1 Requisite Conditions of Communication port

Both Bluetooth port and USB (VCP: Virtual communication port) need following conditions.

BaudRate:	9600bps
Data length:	8 bits
Stop bits:	One bit
Parity:	None
Handshake:	Software (XOn/XOff)

* Confirm Number of Virtual Communication Port in Device Manager in Windows.

* If you don't use the way of Hand-Shake, turn down the quantity of transmission byte under 500 byte per one time in order to prevent text from lack of it.

3.2 Braille Code

BL-1000 LINK can receive the text by the braille code of NABCC (6 dots).

NABCC is standard Braille code, and you can use BL-1000 LINK if the settings in Braille Printer has option of "Generic" and so on.

However if Escape sequence is included inside the data, BL-1000 LINK can't print braille dots properly.

Code to start a new paragraph and to new page

BL-1000 LINK doesn't start a new paragraph or page at regular columns automatically, since it is designed for making braille dot tape in one line by flexible length.

Send surely code of new paragraph and or page at the end of one line of tape.

When BL-1000 LINK receives any one code in the followings, it recognizes it is the end of one line.

Line feed code (10)
New page code (12)
Carriage Return (13)

In the case of those codes are continuously received, BL-1000 LINK goes through since the second code and manage them as one time to start a new paragraph.

4. Transaction of received data

BL-1000 LINK uses the port that received the first text, in ports of Bluetooth port and or USB one.

BL-1000 LINK doesn't print dots on a braille tape, which received text through other port, until it completely prints all of the first text.

BL-1000 LINK starts to print dots after it receives whole text as one line. It stops to receive following text by Handshake.

Cut the tape of printed dots, and push Set key, then it starts to receive following text again.

In the case of the last part in the text doesn't have the code to start new paragraph and or page, it takes one seconds, and then start to print dots on tape.

Braille Labeler BL-1000 LINK

5. Specification

Name:	Braille Labeler
Model:	BL-1000 LINK
Interface:	Bluetooth 5.0 (BR/EDR/LE) USB port Ver.2.0 TypeB BaudRate: 9600bps Data length: 8 bits Stop bits: One bit Parity: None Handshake: Software (XOn/XOff)
Braille Tape:	P/N: BLTP-13A Length 10m
Power Supply:	AC Adaptor (Input AC 100V to 240V, 50/60Hz, Output DC 15V)
Power consumption:	Maximum 18W
Operating Temperature:	41 to 95 °F (5 to 35 °C)
Operating Humidity:	20% to 80%RH (NO DEW)
Measurement:	Width 7.8" (198mm) Length 4.7" (120mm) Height 2.8" (71mm)
Gross weight:	approximately 1.8lb (0.8kg)

System Requirements

Operating system:	Windows® 7/8/8.1/10 (64/32)
Processor:	Intel® Pentium® 1.3 GHz
Memory:	512MB of system memory
Drive:	CD-ROM drive

Memo



1004 Ogawa Ogawa Machi Saitama 355-0321. JAPAN

E-mail: info1@kgs-jpn.co.jp

URL: <https://www.kgs-jpn.co.jp/>

© 2020 KGS CORPORATION All Rights Reserved.